

 Konfurb



**Konfurb Orbit.**  
Wooden 4 Leg Base

[buroseating.com](https://buroseating.com)

Konfurb by  
**buro**  
ergonomics at work®

# Konfurb Orbit.

Acclaimed design.

The Konfurb Orbit chair is designed by internationally acclaimed architect and designer, Mac Stopa. The chair is characterised by a sleek and minimalist design, with a dominant 'wing' style that seamlessly complements various spaces including; relaxation spaces, reception areas and comfortable and informal workplace meeting spaces.

Harmonise the wooden 4 leg base with your choice of Charcoal fabric or Black PU upholstery. For a personalised touch, opt for custom upholstery that complements your interiors.

## Key Features & Benefits.

Wooden 4 Leg Base High Back  
Wooden 4 Leg Base Mid Back

KON183  
KON187



HIGH BACK  
Black PU

HIGH BACK  
Charcoal

### COLOUR HARMONY

Choose from 2 upholstery options or opt for custom upholstery.



### STRONG METAL FRAME

Lightweight, durable & sustainable metal frame construction.



### 4 LEG BASE

in natural wood finish.

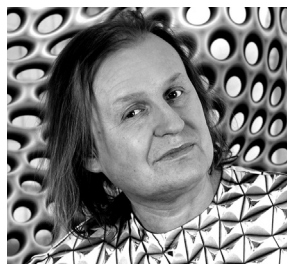


## International Standards & Awards.

The Konfurb Orbit Wooden 4 Leg base chair is supported by the following internationally recognised standard:

- Tested to **ANSI/BIFMA X5.1-2017** General-Purpose Office Chairs

## Designer.



*Mac Stopa, award-winning architect and designer whose work spans several design disciplines. Designer of the Konfurb Orbit.*

## Features.

- Moulded foam on metal frame construction
- Wooden 4 leg base
- No assembly required

## Specifications. (mm)

### High Back

Overall	655w / 705d / 1285h
Back	655w / 850h
Seat	515w / 470d
Seat Height	435h
Arm Height	610h

### Mid Back

Overall	660w / 600d / 835h
Back	650w / 400h
Seat	515w / 465d
Seat Height	435h
Arm Height	625h

## Colours.

Fabric	PU	Custom <sup>2</sup>
Charcoal 2	Black V3	Custom Upholstery Available

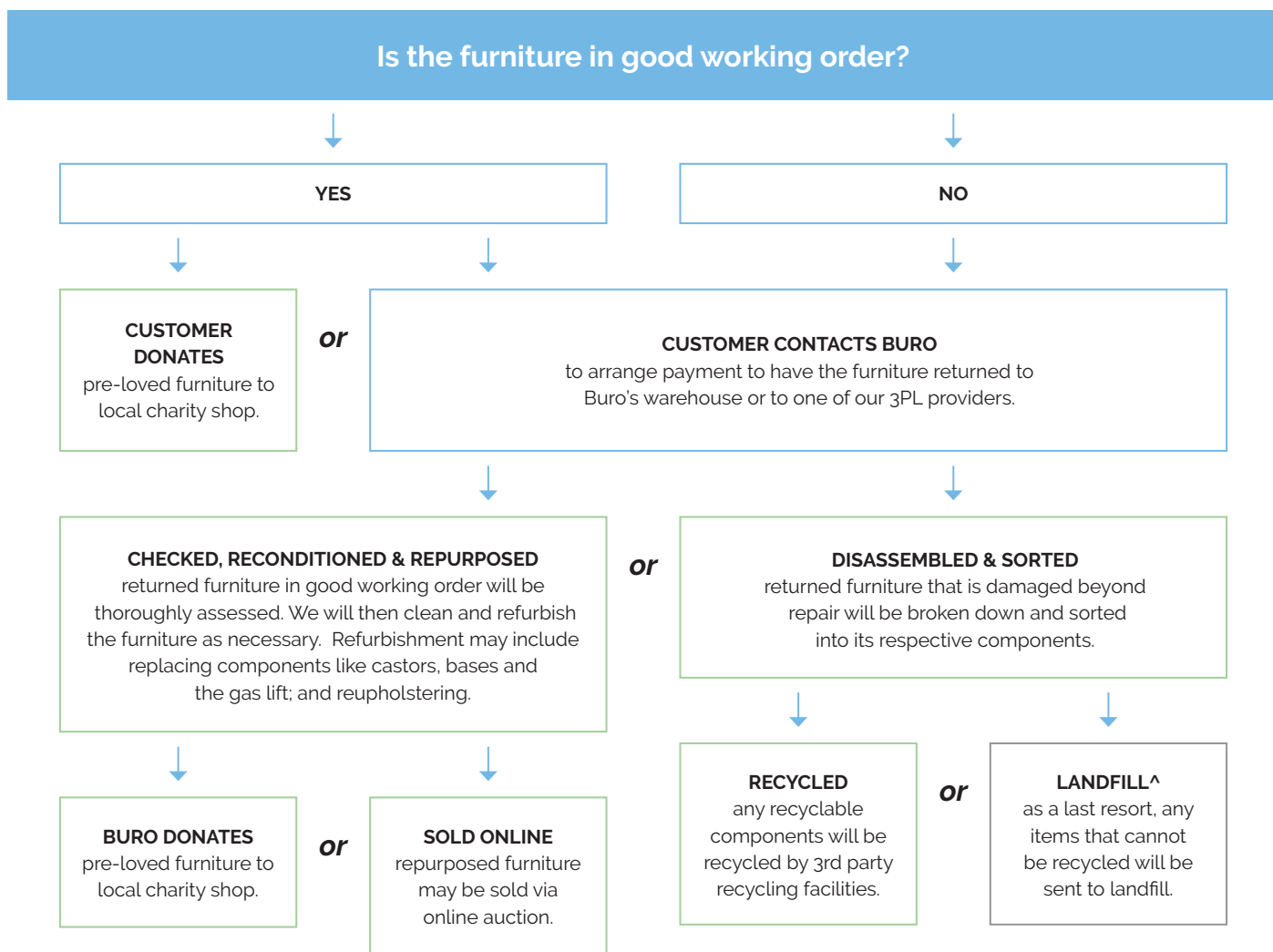


## Quality Assurance and Accreditations.



# Buro Product Stewardship Programme.

We encourage repurposing and recycling of pre-loved office furniture to reduce our impact on the environment. When a customer has Buro furniture\* that they wish to dispose of, we apply the following steps to determine the most appropriate method.



To mitigate our CO2 footprint over the next 50 years, we're working with **Trees That Count**, a conservation charity dedicated to planting native trees.

By funding the planting of native trees, we're supporting efforts to increase biodiversity across New Zealand.

**Buro** proudly support **Greening Australia**.

Greening Australia has been restoring Australia's unique landscapes and protecting biodiversity at scale through collaborative, science-based programs for over 40 years.  
[www.greeningaustralia.org.au](http://www.greeningaustralia.org.au)

As a **Sedex member** we are committed to being a responsible business, sourcing responsibly, and improving ethical standards and working conditions within the supply chain.

\*Qualifying furniture must be Buro branded product (Buro Seating, Konfurb, Mondo), or a partner exclusive brand.  
^Many of our products are GREENGUARD certified for safe emission levels. This reduces the environmental impact when sending any components to landfill.